

# TADANO TL300E

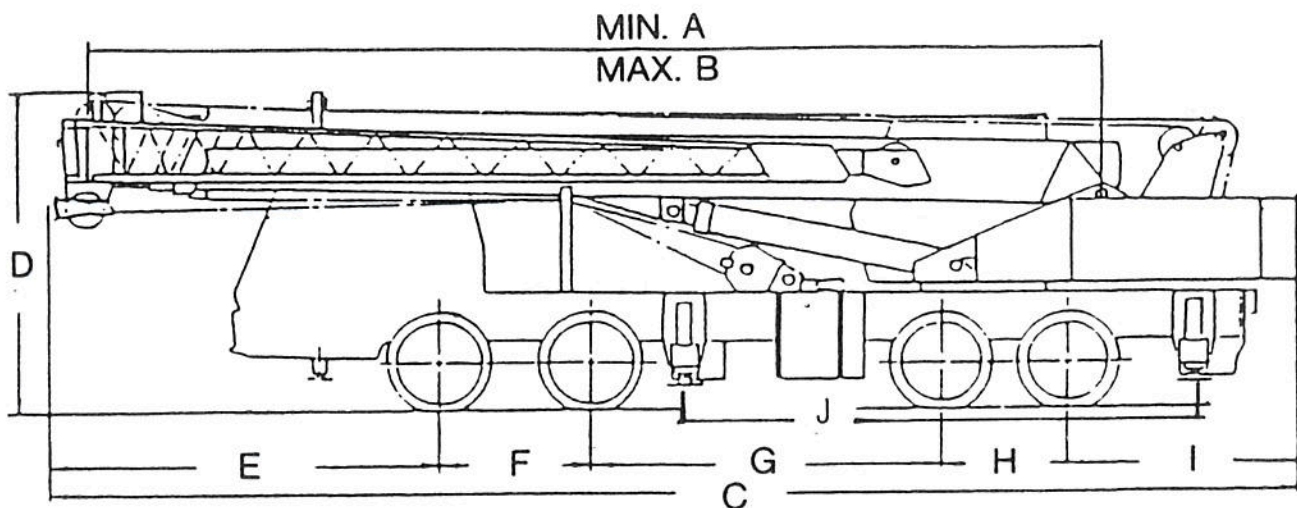
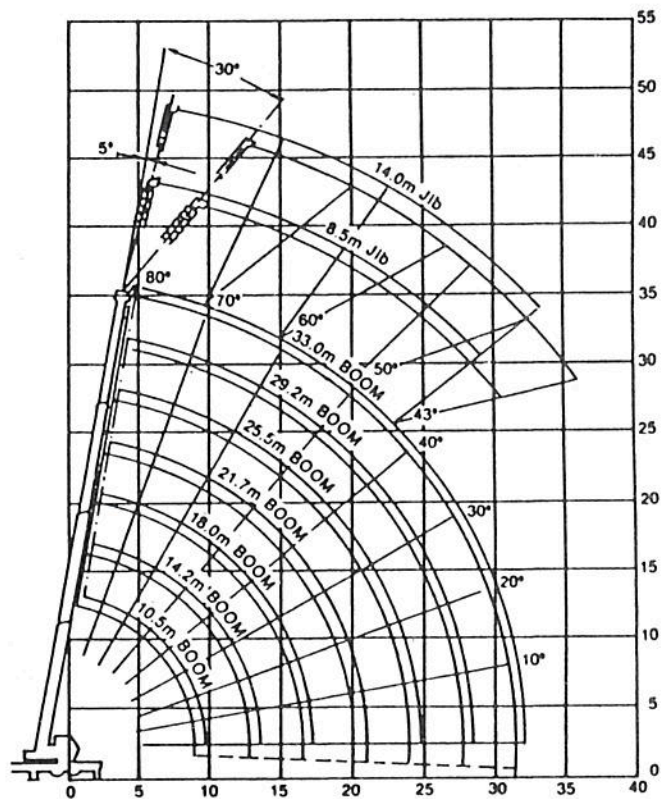
The lifting heights and boom angles listed right are based on a straight (unladen) boom, and allowances should be made for boom deflection obtained under laden conditions.

Overall Width 2,490 mm  
Tail swing radius 3,350 mm

Fully 6,100 mm  
Middle 4,000 mm

Front 10,400 kg  
Rear 18,800 kg  
Gross vehicle weight 29,200 kg

A - 10,500
B - 33,000
C - 12,630
D - 3,600
E - 4,165
F - 1,370
G - 3,680
H - 1,300
I - 2,115
J - 4,700



All specifications are indicative any additional specific detail is available upon request. This information is only to be used as a guideline

# TADANO TL300E

**NOTE:**

1. These capacities are base on condition that the crane is set on firm ground horizontally. Those above bold lines are base on crane strength and those below, on its stability.
2. Total rated loads below bold green lines do not exceed 75% of tipping load.
3. When the front jack is used, the total rated loads for the 'Over sides and rear' are applicable even within the over front area.
4. Te weight of the hook (350kg for 30,000kg capacity, 60kg for 3,000kg capacity), slings and all similarly used load handling devices must be added to the weight of the load.
5. Standard number of part lines for each boom length is as shown below. Load per line should not surpass 3,000kg.

Boom Length	10.5m	14.2m	18.0m	21.7m	25.5m	29.2m	33.0m	Jib	Single Top
No. of Part Lines	10	7	7	4	4	4	4	1	1

6. For total load of single top, reduce load shown in following table from relevant total rated load. Total rated loads of single top should not exceed 3,000kg

Boom Length	10.5m	14.2m	18.1m	21.7m	25.5m	29.2m	33.0m
Load Reduction	0kg	150kg	150kg	250kg	250kg	300kg	300kg

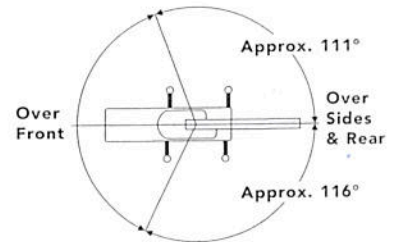
7. Free-fall operation should be performed without any load on the hook.
8. 1,600kg shall be subtracted from the rated lifting loads of the main boom, when jib is attached to main boom head.
9. Special weather caution: Refer the operation and maintenance manual.

## OUTRIGGERS FULLY EXTENDED FRONT JACK EXTENDED 360°

B \ A	°	10.5m		14.2m		18.0m		21.7m		25.5m		29.2m		33.0m	
		°	kg	°	kg	°	kg	°	kg	°	kg	°	kg	°	kg
3.0m	66	30,000	73	20,000	77	16,000									
3.5m	63	25,400	71	20,000	75	16,000	78	12,000							
4.0m	60	22,900	69	20,000	74	16,000	77	12,000	79	11,500					
4.5m	57	21,000	67	20,000	72	16,000	76	12,000	78	11,500					
5.0m	53	19,400	64	18,400	70	16,000	74	12,000	77	11,500	79	9,000			
5.5m	50	17,700	62	16,800	69	14,750	73	12,000	76	11,500	78	9,000	80	7,000	
6.0m	46	16,200	60	15,300	67	13,700	72	12,000	75	11,500	77	9,000	79	7,000	
7.0m	38	13,300	55	12,650	63	11,950	69	11,000	72	10,000	75	9,000	77	7,000	
8.0m	27	11,000	49	11,000	59	10,550	66	10,200	70	8,900	73	8,200	75	7,000	
9.0m			44	9,000	55	9,000	63	9,200	68	8,050	71	7,450	74	6,250	
10.0m			37	7,300	51	7,300	60	7,700	65	7,300	69	6,750	72	5,700	
12.0m			19	5,050	42	5,050	53	5,450	60	5,700	65	5,650	68	4,800	
14.0m					31	3,600	46	4,000	54	4,250	60	4,400	64	4,100	
16.0m					12	2,500	38	2,950	48	3,200	55	3,400	60	3,450	
18.0m							27	2,200	42	2,450	50	2,650	56	2,800	
20.0m							9	1,550	34	1,850	44	2,050	51	2,200	
22.0m									24	1,350	38	1,550	47	1,750	
24.0m											31	1,200	41	1,350	
26.0m											21	850	36	1,000	
28.0m													29	700	
30.0m													19	500	

C \ D	8.5m		14.0m	
	5°	30°	5°	30°
80	3,000	1,600	2,000	900
78	3,000	1,600	2,000	900
77	3,000	1,600	2,000	850
76	3,000	1,600	1,920	800
75	3,000	1,550	1,810	770
70	2,280	1,360	1,400	690
65	1,850	1,210	1,080	630
60	1,570	1,100	880	580
55	1,160	1,000	740	530
50	750	700	550	450
45	450	450	350	300
43	350	350	250	250

A : Boom Length B : Working Radius C : Jib Length D : Jib Offset  
° : Boom Angle



## OUTRIGGERS FULLY EXTENDED (OVER FRONT) WITHOUT FRONT JACK

B \ A	°	10.5m		14.2m		18.0m		21.7m		25.5m		29.2m		33.0m	
		°	kg	°	kg	°	kg	°	kg	°	kg	°	kg	°	kg
3.0m	66	27,000	73	20,000	77	16,000									
3.5m	63	23,000	70	20,000	75	16,000	78	12,000							
4.0m	60	19,500	69	20,000	74	16,000	77	12,000	79	11,500					
4.5m	57	16,600	66	17,100	72	16,000	76	12,000	78	11,500					
5.0m	53	14,250	64	14,200	70	13,800	74	12,000	77	11,500	79	9,000			
5.5m	50	11,900	62	11,800	68	11,600	73	12,000	76	11,500	78	9,000	80	7,000	
6.0m	46	10,100	59	10,000	67	9,900	71	10,300	75	10,300	77	9,000	79	7,000	
6.5m	42	8,650	57	8,600	65	8,550	70	8,950	74	9,200	76	9,000	78	7,000	
7.0m	37	7,550	55	7,500	63	7,400	68	7,850	72	8,200	75	8,400	77	7,000	
7.5m	33	6,500	52	6,500	61	6,400	67	6,800	71	7,200	74	7,400	76	7,000	
8.0m	27	5,600	49	5,600	59	5,600	65	6,000	70	6,400	75	6,600	75	6,500	
9.0m			44	4,300	55	4,250	62	4,700	67	5,000	71	5,200	74	5,350	
10.0m			37	3,300	51	3,300	59	3,700	65	4,000	68	4,200	72	4,400	
12.0m			19	1,900	42	1,900	53	2,350	59	2,600	64	2,800	68	3,000	
14.0m					31	950	46	1,400	54	1,700	59	1,900	64	2,050	
15.0m							42	1,050	51	1,300	57	1,550	62	1,700	
16.0m									48	1,000	55	1,200	60	1,350	
17.0m											52	950	57	1,100	
18.0m													55	850	

All specifications are indicative any additional specific detail is available upon request. This information is only to be used as a guideline